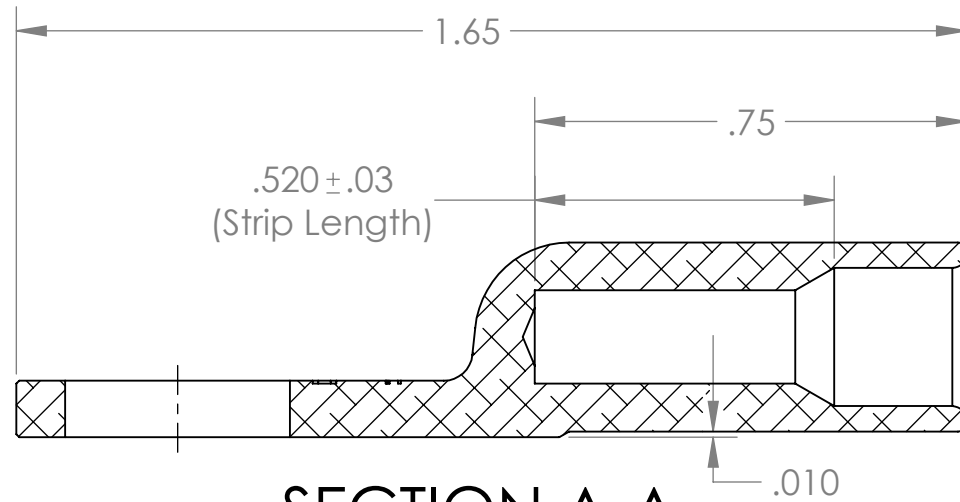
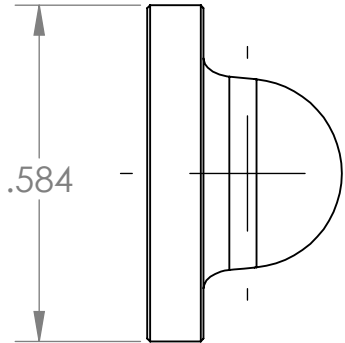


MASS = 3.8 g MAX

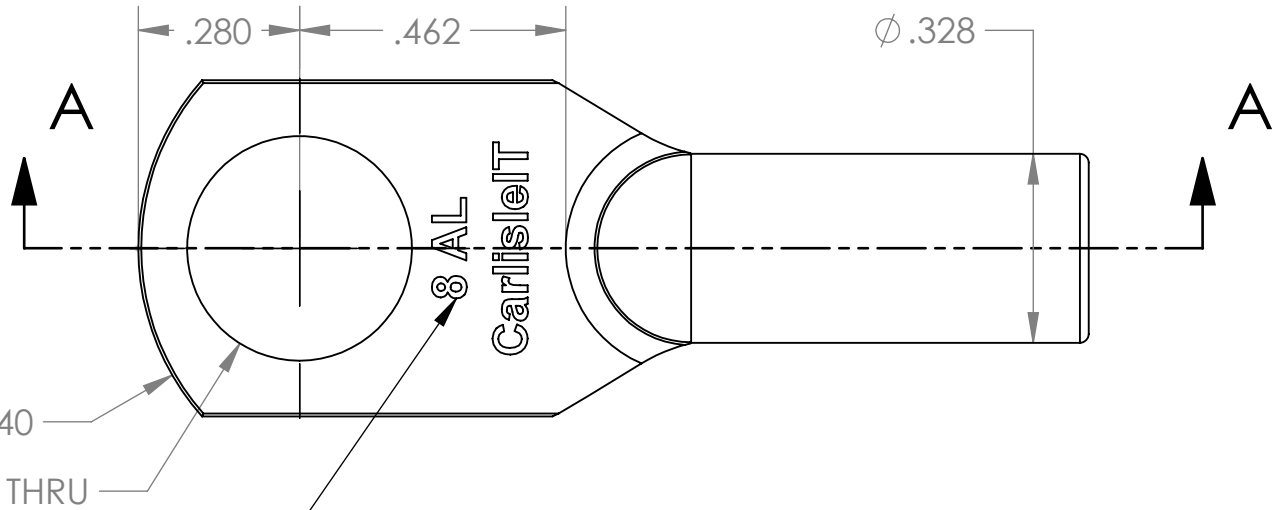


SECTION A-A
SCALE 3 : 1

.098



.584



Legend approx. as shown

MAT'L CODE	MATERIAL DESCRIPTION	FIN CODE	FINISH DESCRIPTION	REV	E.C.O. NO.	DATE	APPR	DRAW	ENG.	DESCRIPTION	PG. 1 OF 1
	ALUMINUM		P/N Suffix: N = Nickel Plating N+ = Enhanced Nickel Plating SN = Tin Plating	IR	ORIGINATED	1/26/2018	JWC	WLA	9/4/2008	DESIGN, CONFIGURATION AND MECHANICAL FEATURES REVEALED ON THIS DRAWING ARE THE SOLE PROPERTY OF TENSOLITE A CARLISLE COMPANY AND ARE NOT TO BE DISCLOSED TO OTHER PARTIES WITHOUT EXPRESS CONSENT AND APPROVAL OF TENSOLITE. Tensolite A CARLISLE Company 100 Tensolite Dr. St. Augustine Fl. 32092	DESCRIPTION Aluminum Lug 8 AWG, 1 Hole FSCM. 92607 NO. 695-18113-001
								WLA	9/4/2008		

DIMENSIONS IN INCHES
THIRD ANGLE PROJECTION
TOLERANCES UNLESS OTHERWISE SPECIFIED
ANGLES ±2°
WHOLE NUMBERS
.XX DECIMALS ±.02
.XXX DECIMALS ±.005
.XXXX DECIMALS ±.0015